



AL-KHALIL
RESIDENCIA

MASTER DEVELOPER
ZIA DEVELOPERS



Inception

AL- KHALIL RESIDENCIA

AL- KHALIL RESIDENCIA This Jewel got it's inspiration from the vast wandering across continents transforming into a simplicity with luxury. We create an experience of an exceptional life style.



Heart of Pakistan 'Lahore'

The very epicenter of the most populous province. It is a confluence of 65% of Pakistan's population visiting Lahore. It is enriched with centuries old history and culture alongside being a gastronome's paradise preserving culinary heritage. It is the second biggest metropolis in the country full of life with its bells and whistles.

A Place to be

Central Business District "CBD" Punjab is the confluence of 156 Million population's convergence footprint. The envisioned center of all activities, addressing from government affairs to corporate activities to living premium lifestyle. It is situated at the midpoint with access to 4 signal free corridors. Cherry on Top is the vicinity of FCC, sheer upscale and prestigious locality, whose address everyone aspires to have.





AL-Khalil Residencia

It is a composition of a luxury apartments. Upmarket apartments coupled with exceptional amenities. In addition, it carries on the serene tranquility, from the very entrance, traversing through its corridors, into each living space, projecting a walk through experience.

Captivating Entrance

AL-Khalil Residencia greets you with all the warmth. It sets the stage to your one of a kind experience inviting to a retreat like feeling, welcoming you to serenity. Round-the-clock concierge to furnish to your requisite. A congenial meet and greet space for the guests and the inhabitants.





The Soul Searching

The Art is "Mediterranean Seascape", a painting by Dubovskoy Nikolai Nikanorovich a Russian landscape painter. His vast travels through Western Europe and Near East made him Master of picturesque landscape, a transitory phase from romanticism to symbolism. This calm state of nature is depicted oil on canvas done in 1893.

An Exceptional Specification

An overview of an exclusive living, reflecting from foyer to coffee to living areas into its up top bar. The environment offers a chic space encompassing and sprinkled with elements.





An Ambient Living

A homey living space providing the scenic view of nature outside; with enhanced hand picked viewing of your choice inside in a snugly sitting. It is set into a well equipped very carefully furnished ambiance to put the occupants at ease.

Taste Tantalizing Spot

A well provisioned kitchen for creating, crafting and cooking a mouthwatering meal tormenting taste buds to satisfy ones satiety. Equipment at gourmet's standards for the people with discerning taste to play as they deem, enjoying the process and it's outcome.





A Sumptuous Bedroom

An adequate, efficiently kindled retiring chambers, embellished with all the needs before and to shut-eye to revitalized your body and soul for the following new day. All the lighting controls inside and out to get you in the right frame of mind to suit your mod.

A Regal Bedroom

An exalted noble milieu, ornated with the exquisitely decorated surroundings, denoting finesse in attention to detail. A warm mixture of elements filling the environment with abundance of warmth and comfort.





State of the Art Washroom

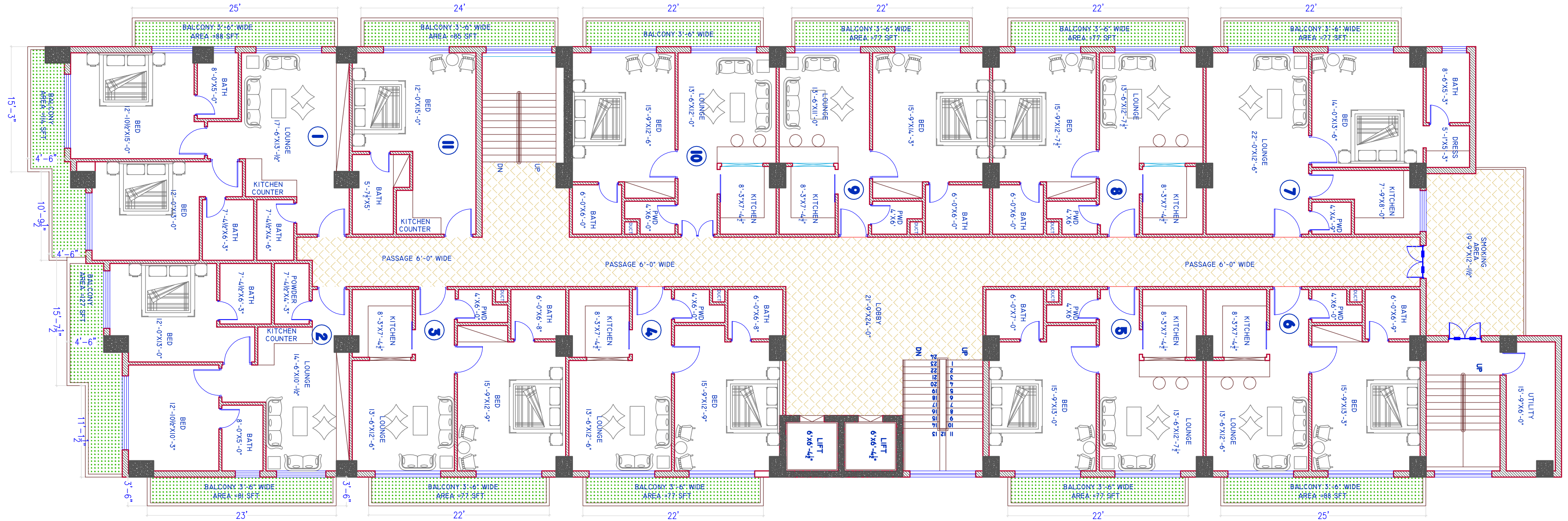
A bathroom area fitted with automated facilities, maintaining hygiene through Ultraviolet C (blue light) disinfection and enabled with infrared lamp to health benefits. A streamlined and well equipped vanity staged next to a jacuzzi with all the warm water massage jets to transcend into tranquility.

Sky Lounge

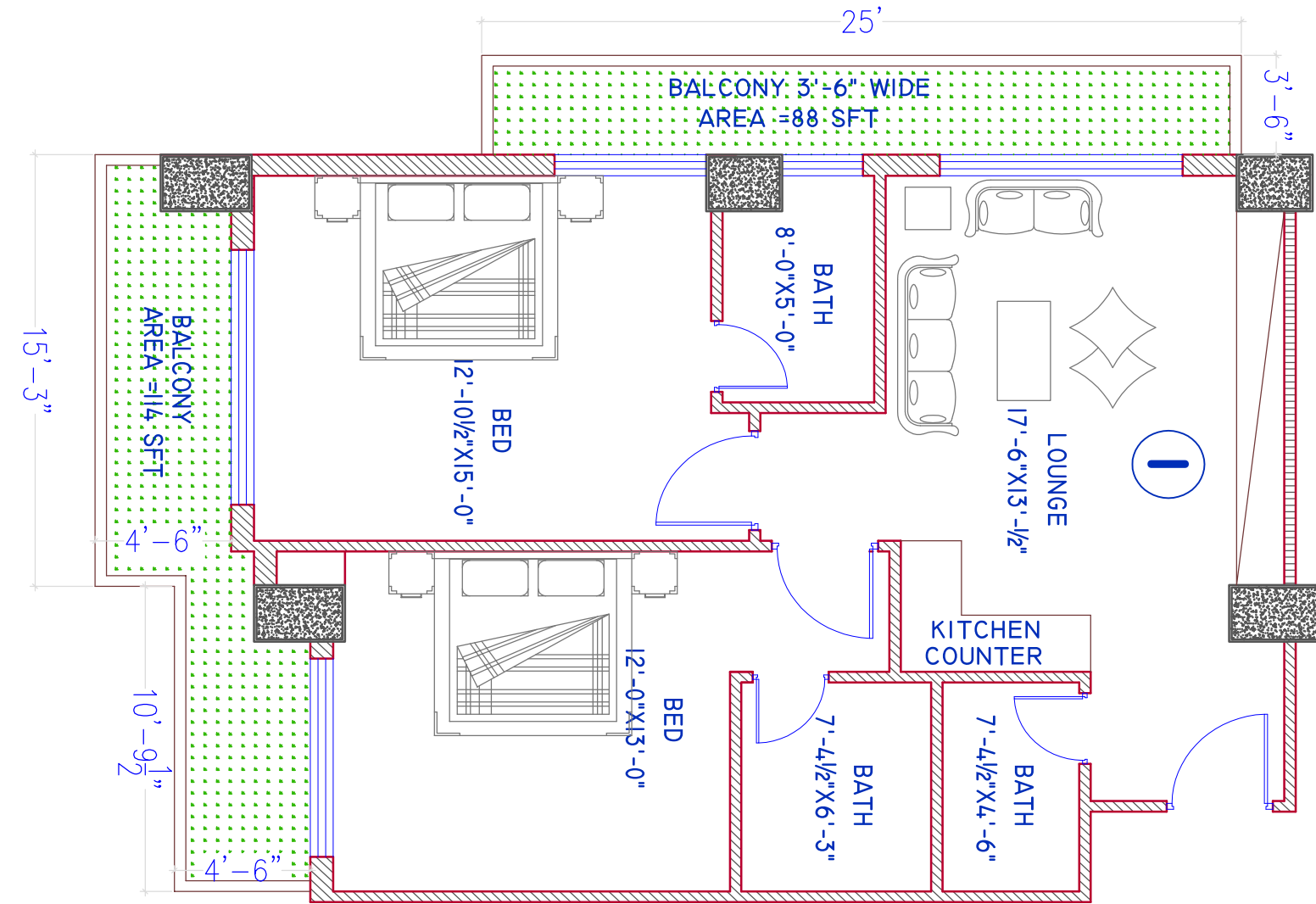
A reposeful freshness feel, allowing mind and body to loosen up with scenic view of natural environment. To further enhance the experience, fascinate with flavors of grill and quench the thirst with exquisite beverages in the company you would like to chillout with.



FRONT

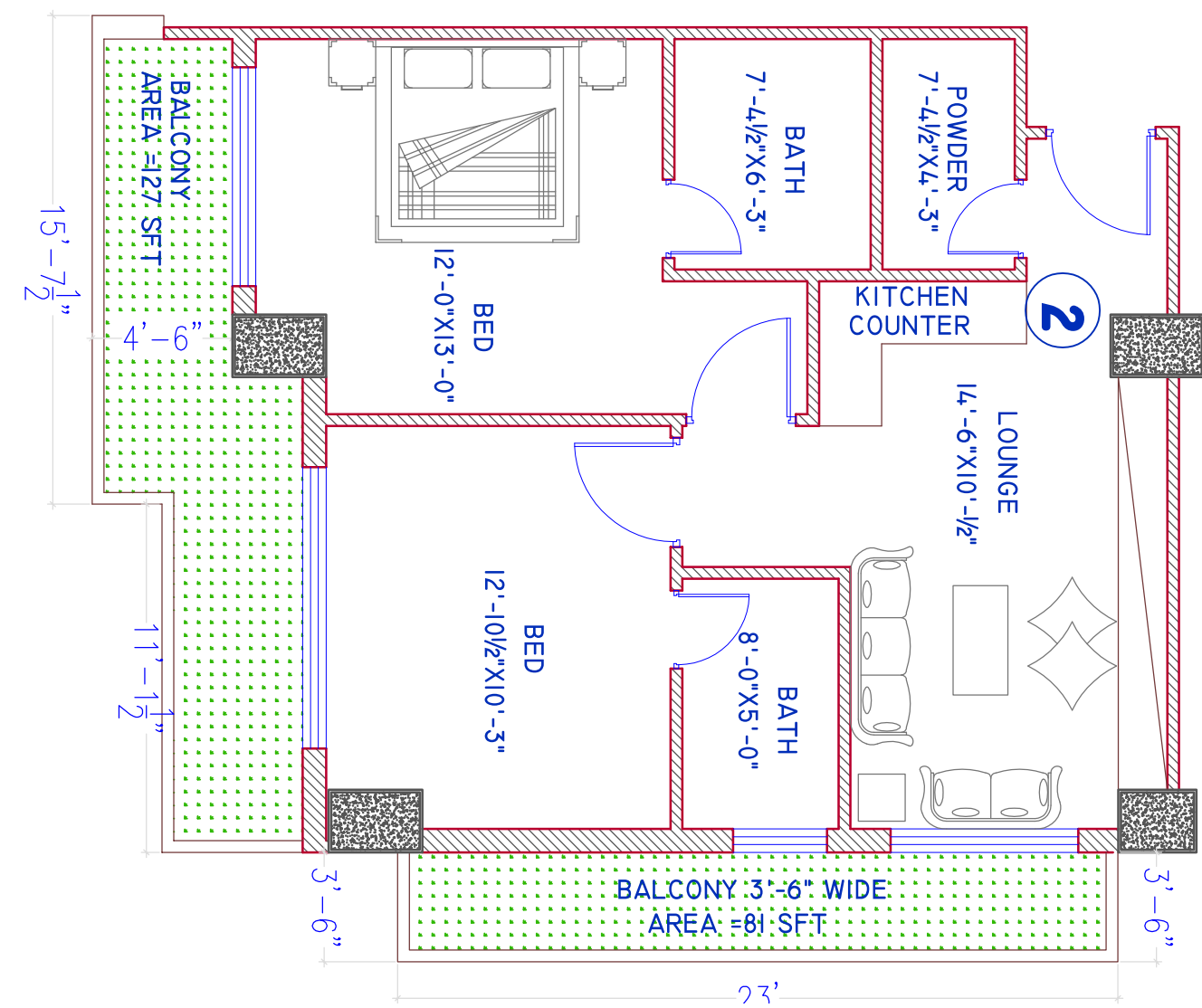


2 BED



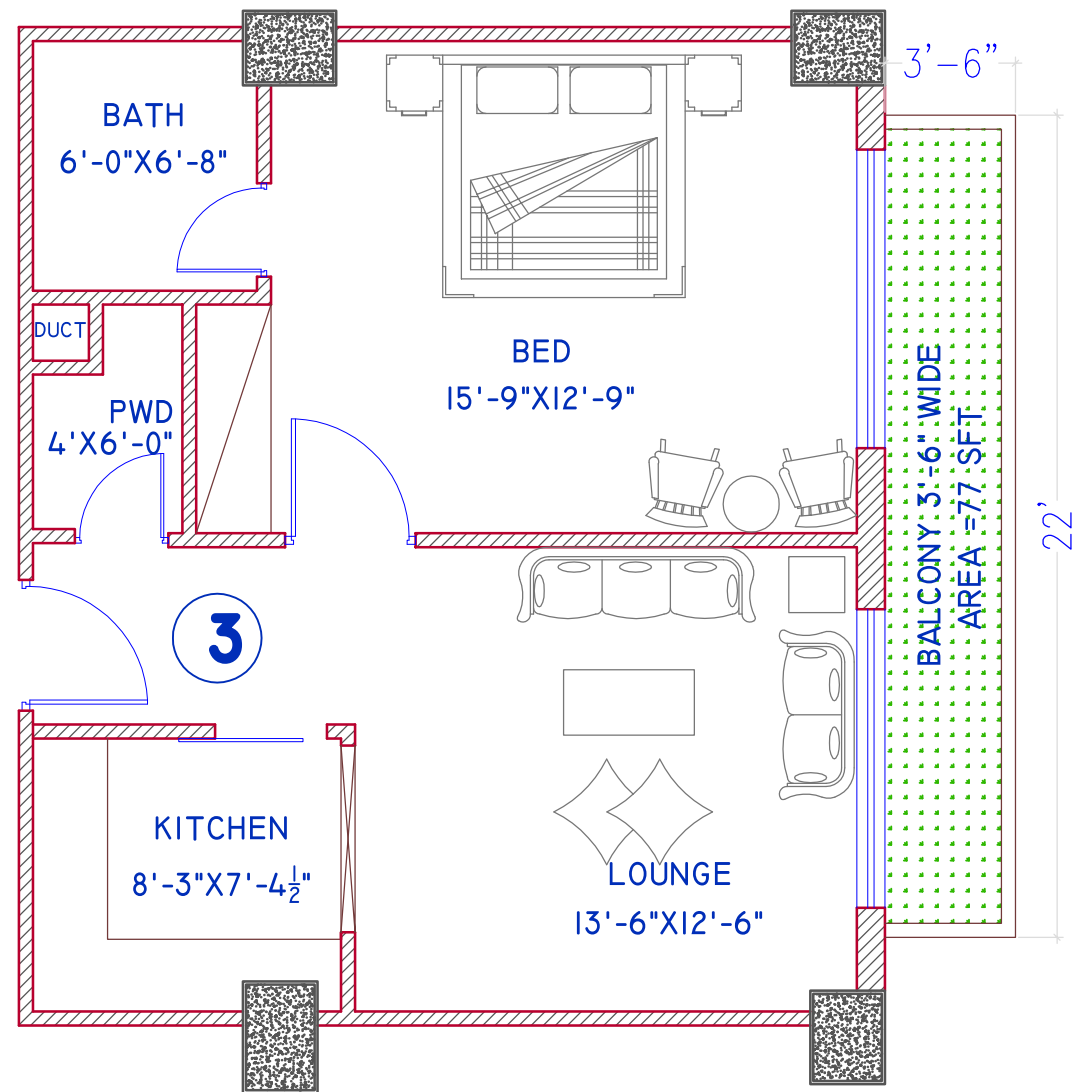
TOTAL AREA 1154.44 SFT

2 BED



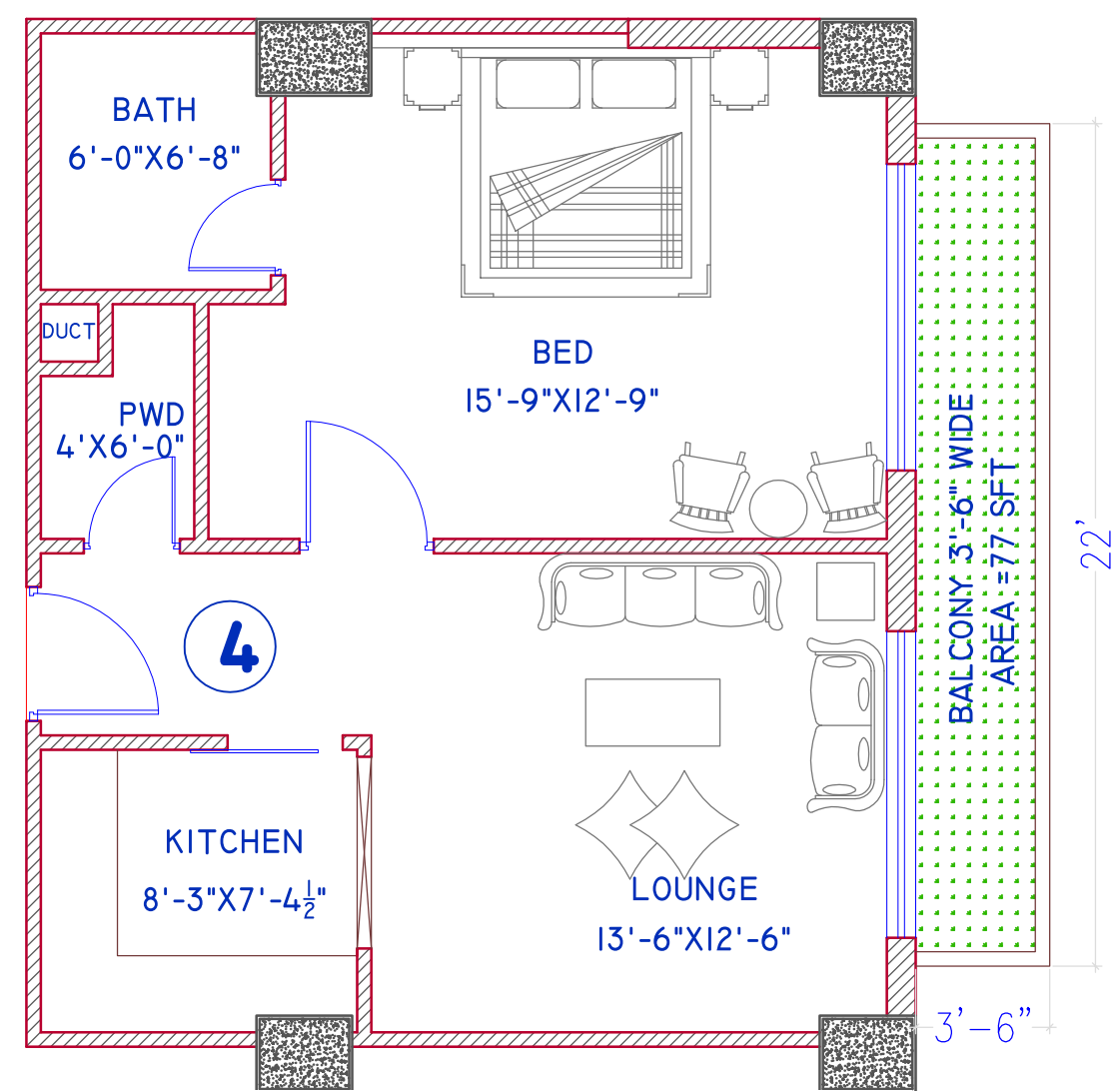
TOTAL AREA 984.20 SFT

1 BED



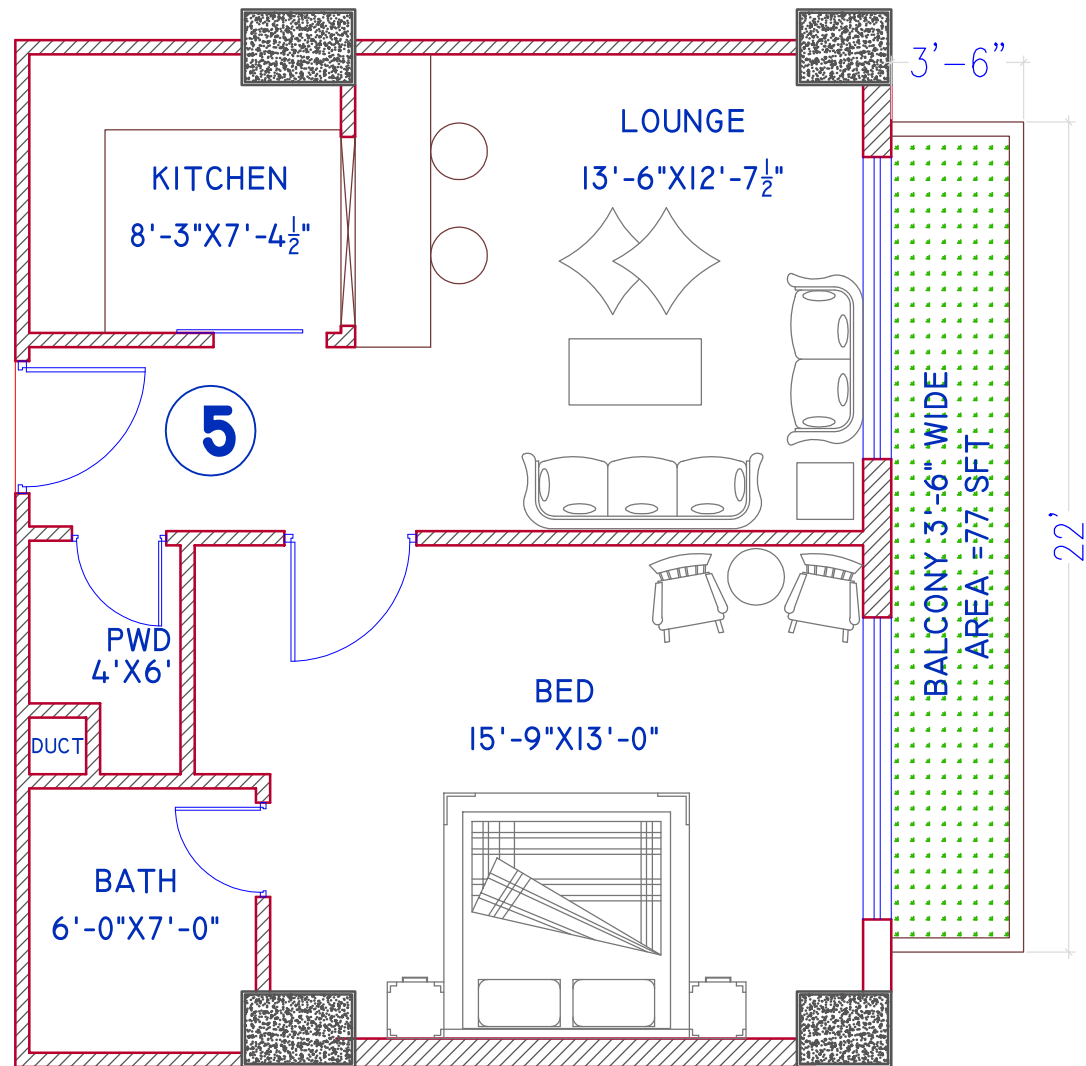
TOTAL AREA 812.63 SFT

1 BED



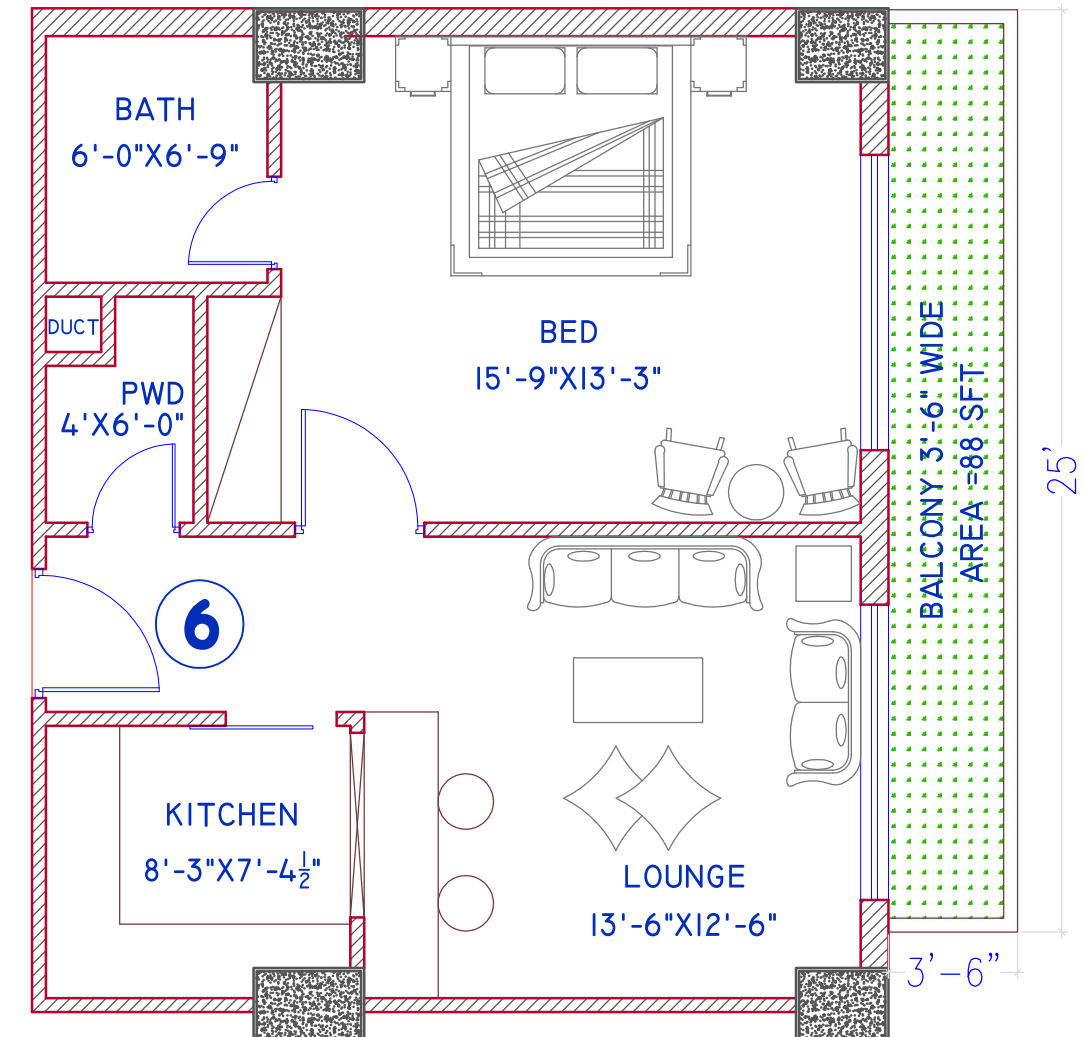
TOTAL AREA 820.61 SFT

1 BED



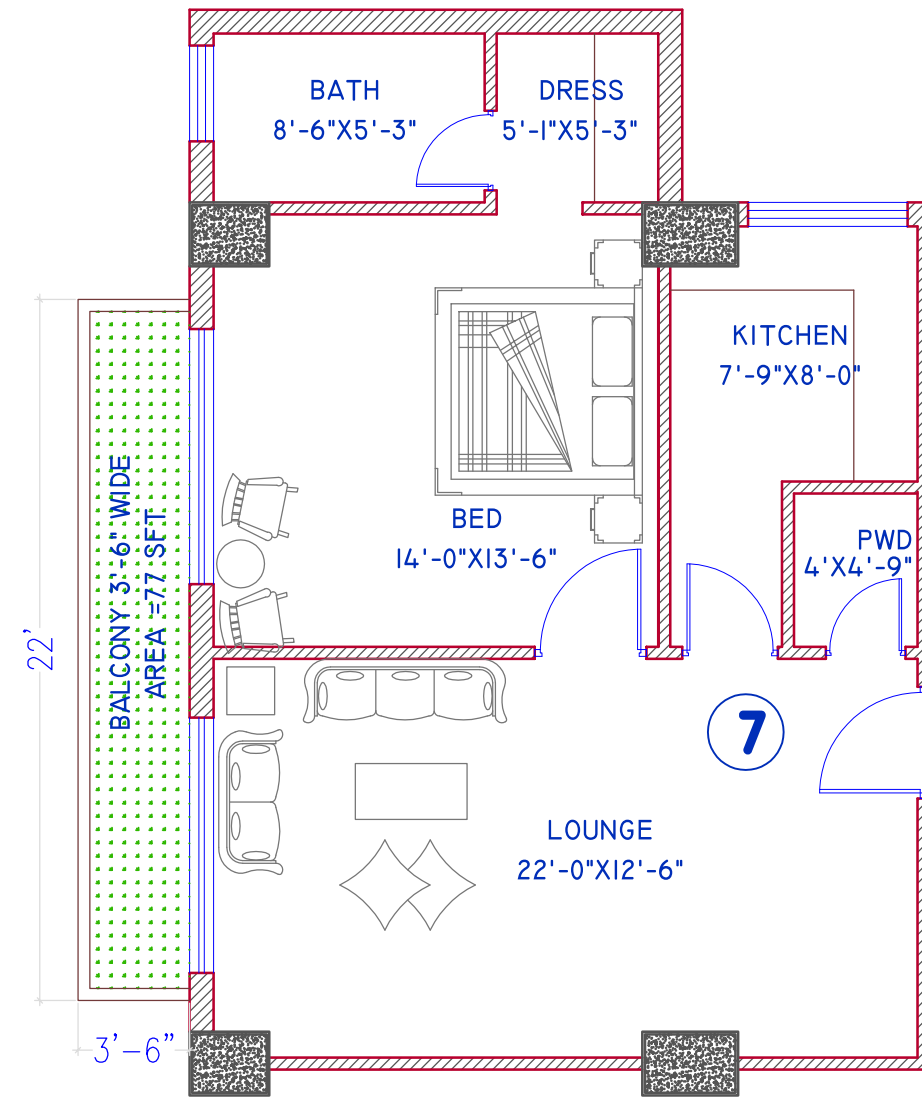
TOTAL AREA 824.60 SFT

1 BED



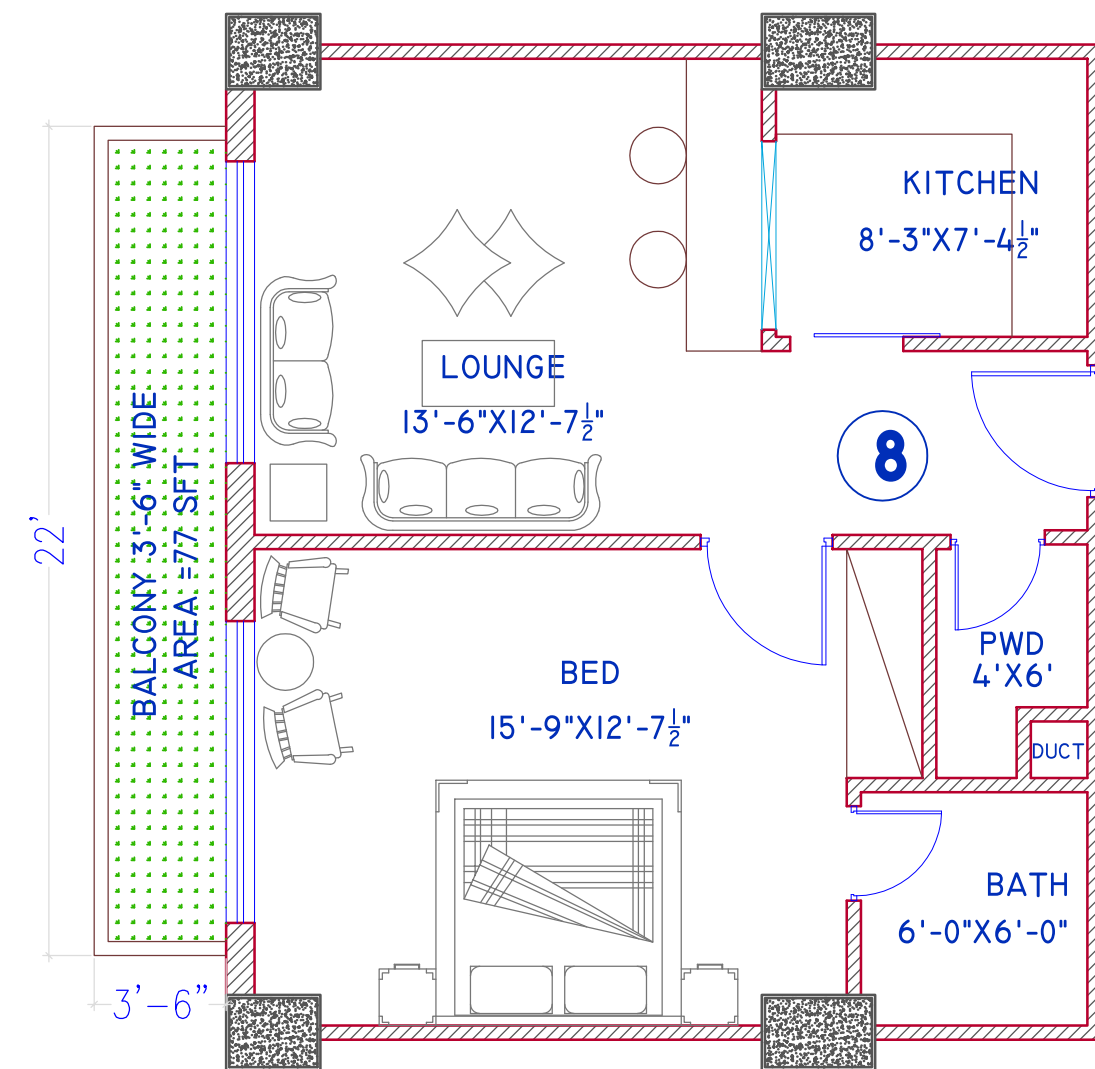
TOTAL AREA 820.61 SFT

1 BED



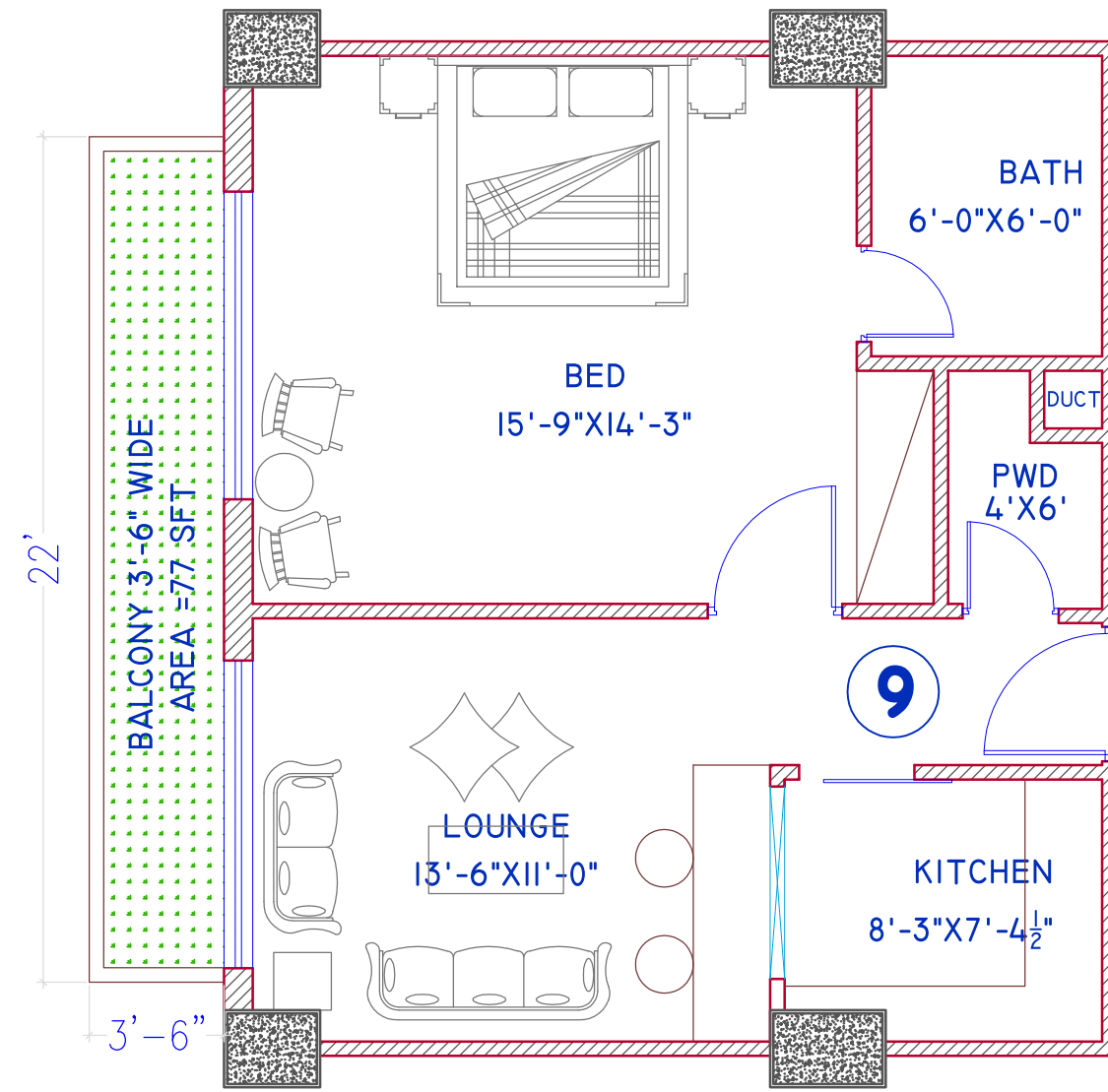
TOTAL AREA 957.60 SFT

1 BED



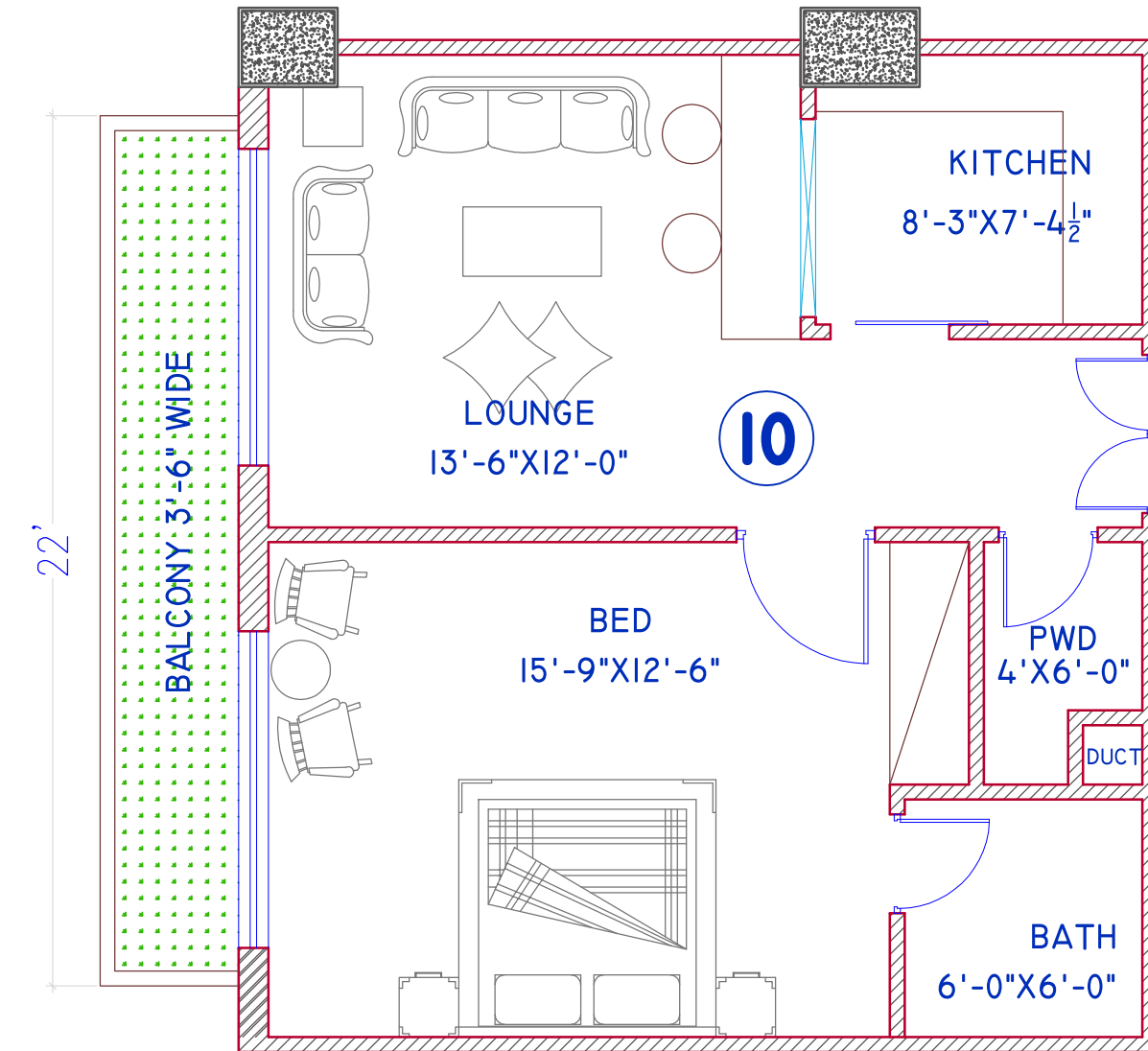
TOTAL AREA 803.32 SFT

1 BED



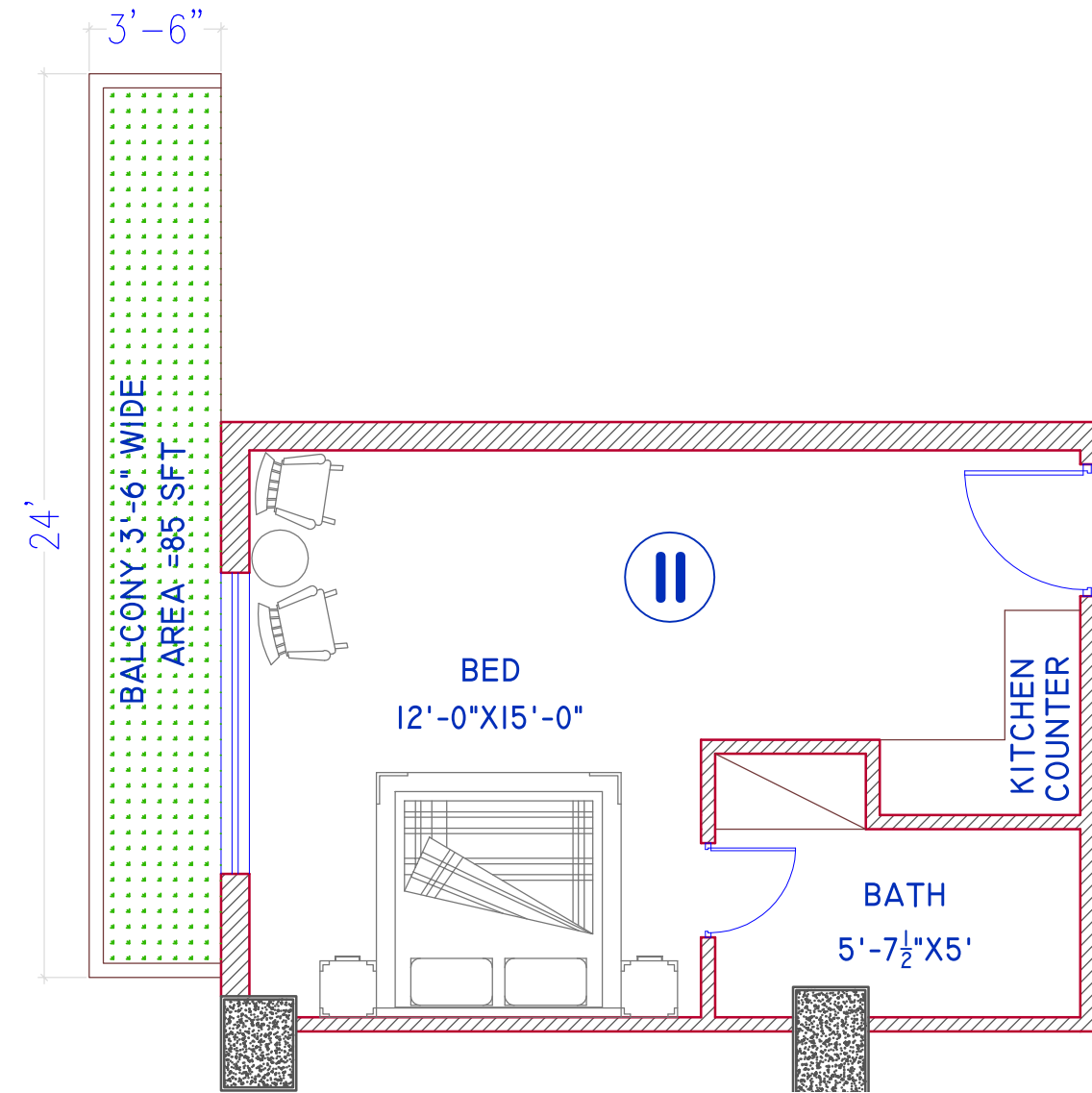
TOTAL REA 803.32 SFT

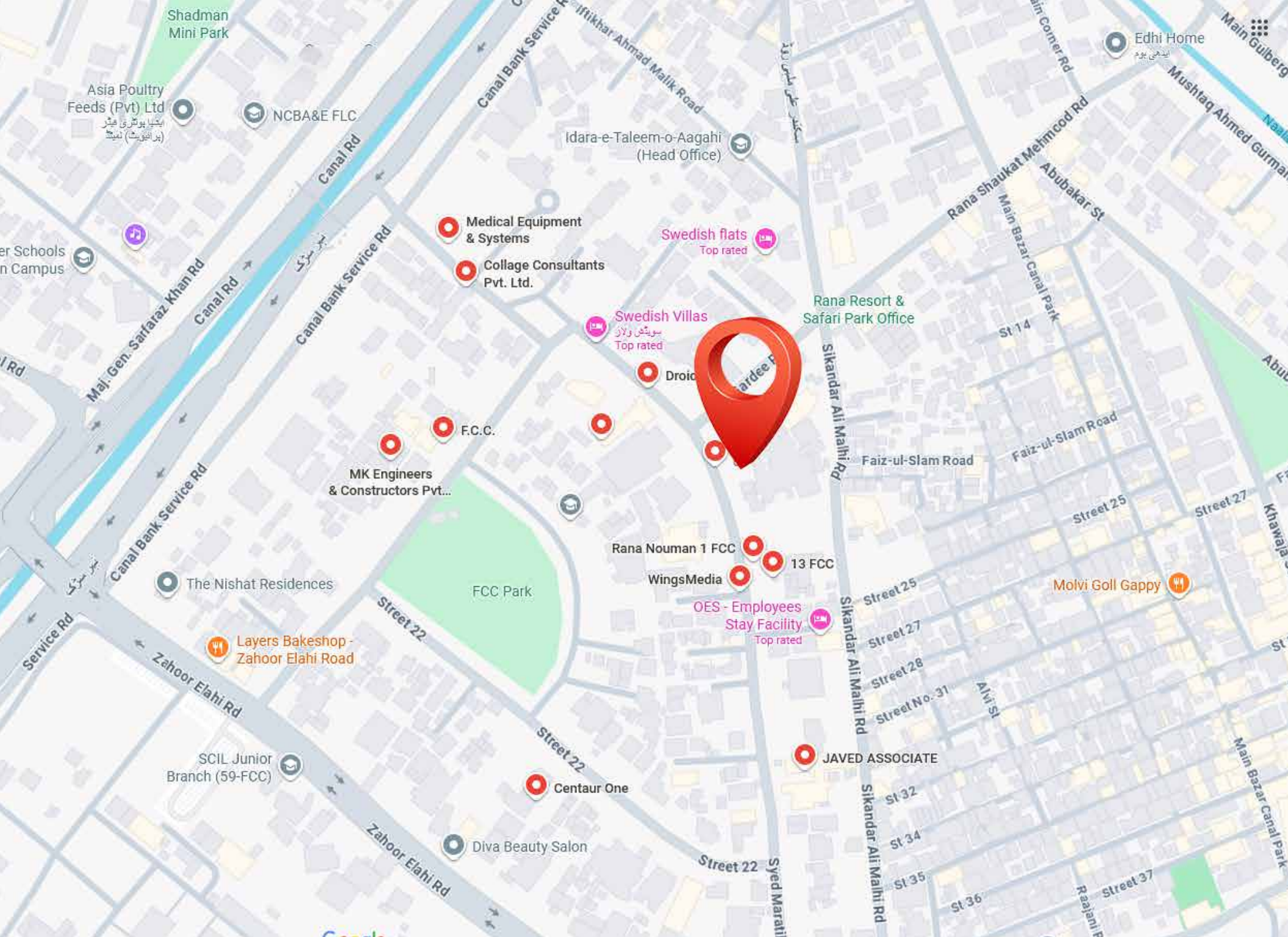
1 BED



TOTAL AREA 901.74 SFT

STUDIO







AL-KHALIL
RESIDENCIA

**10C F.C.C SYED MARATIB ALI ROAD,
LAHORE, PAKISTAN**

alkhalilresidencia.com